

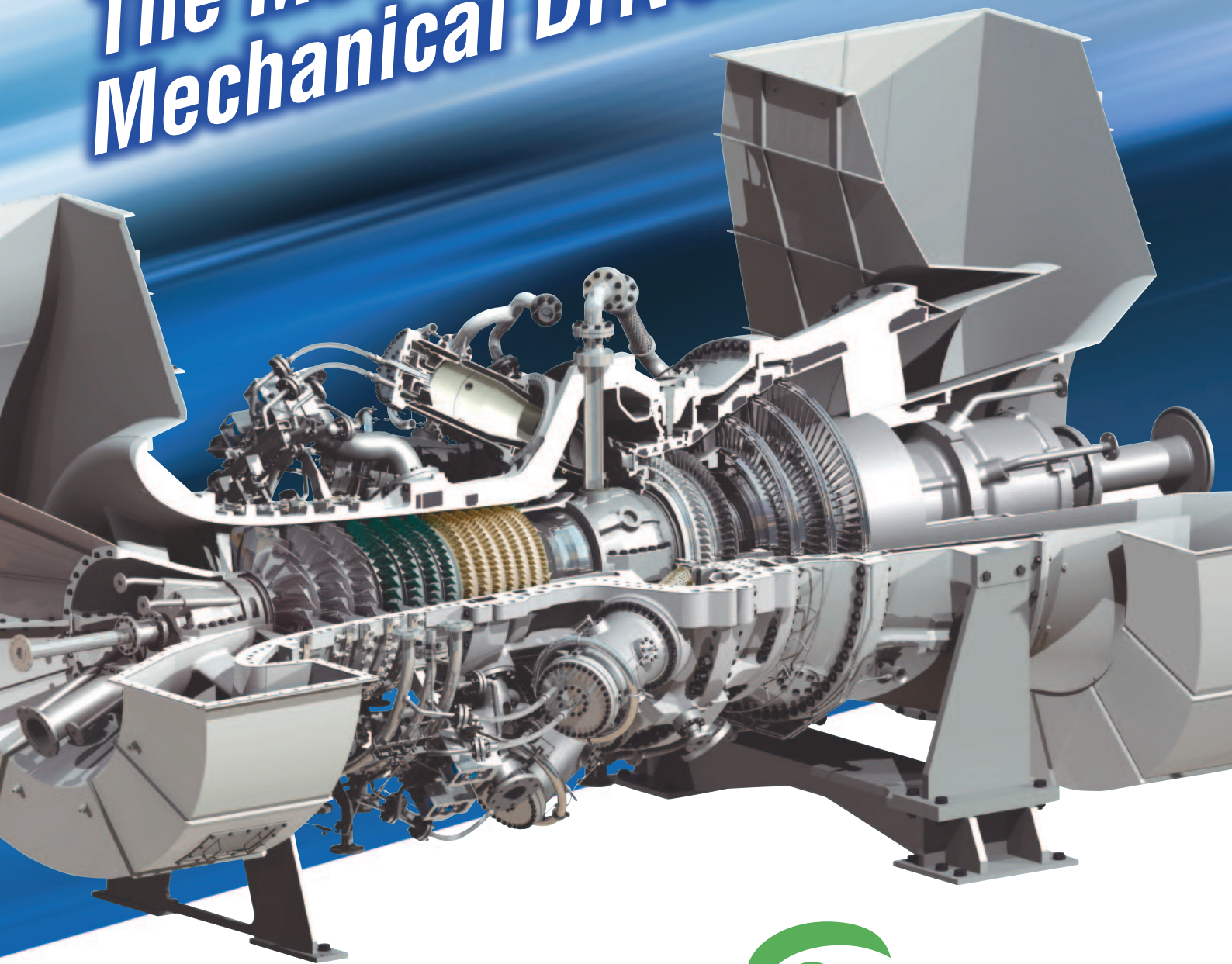
 **Kawasaki**

**L30A**

30MW Gas Turbine

Mechanical Drive  
Application

**The Most Efficient Heavy-Duty  
Mechanical Driver!**



 **GREEN**  
Gas Turbines

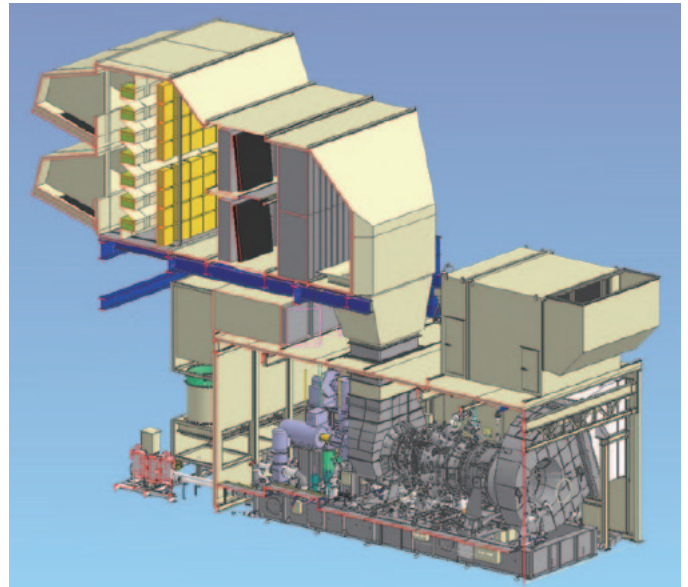
# L30A

# Mechanical Drive Application

## 30MW Gas Turbine

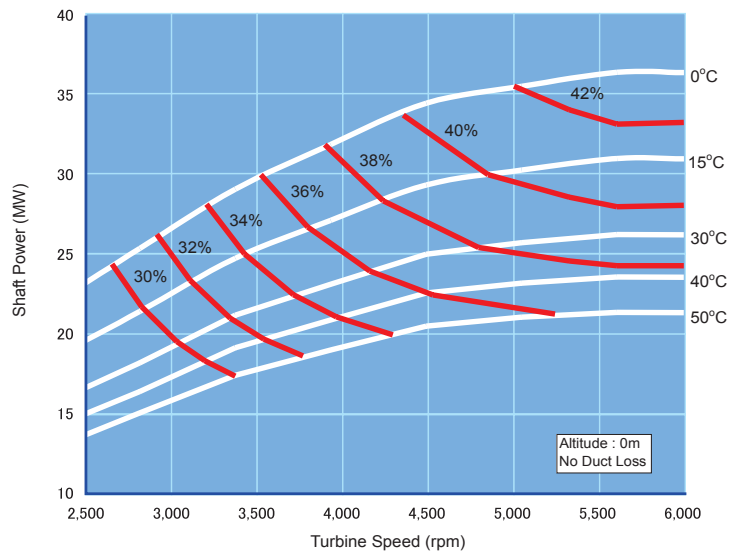
### Key Features

- Highest Efficiency in Class
  - ✓ World's most efficient 30MW twin-shaft gas turbine
- Low Emissions
  - ✓ Eco-friendly with low NOx emissions
  - ✓ Meet local regulations and minimum environmental impact
- Easy Maintenance
  - ✓ Lower life-cycle-cost and easy-to-maintain design
  - ✓ Longer maintenance intervals with superior site maintainability



### Mechanical Drive Performance

Shaft Output	30.9 MW (41.6 khp)
Shaft Efficiency	41.3%
Heat Rate	8,717 kJ/kWh (6,164 Btu/hp-hr)
Turbine Speed	2,800~5,880 rpm
Pressure Ratio	24.9
Exhaust Gas Flow	88.7 kg/s (195.6 lb/s)
Exhaust Gas Temp.	470 °C (878°F)
NOx Emissions	< 15 ppm (O <sub>2</sub> =15%) with DLE
ISO Rating, Natural gas (100% CH <sub>4</sub> , LHV=35.9 MJ/Nm <sup>3</sup> )	



<http://www.khi.co.jp/english/gasturbine/>

**Kawasaki Heavy Industries, Ltd. Gas Turbine Division**  
 Phone: +81-3-3435-2579 Fax: +81-3-3435-2592

**Kawasaki Machine Systems, Ltd. (Asia Division)**  
 Phone: +81-3-3435-2977 Fax: +81-3-3435-2592

**Kawasaki Gas Turbine Asia Sdn Bhd : (KGA)**  
 Phone: +60-3-7846-2882 Fax: +60-3-7848-3093  
[www.kga.com.my](http://www.kga.com.my)

**Kawasaki Gas Turbine Europe GmbH : (KGE)**  
 Phone: +49-6172-7363-0 Fax: +49-6172-7363-55  
[www.kawasaki-gasturbine.de](http://www.kawasaki-gasturbine.de)

**Kawasaki Gas Turbines-Americas : (KGT-A)**  
 Phone: +1-281-970-3255 Fax: +1-281-970-6465  
[www.kawasakigasturbines.com](http://www.kawasakigasturbines.com)

**Kawasaki Machine Systems, Ltd. (Shanghai Rep.Office)**  
 Phone: +86-21-3366-3500 Fax: +86-21-3366-3505

**Kawasaki Heavy Industries Middle East FZE : (KHI-ME)**  
 Phone: +971-4-214-6727 Fax: +971-4-214-6729

**Kawasaki Gas Turbines-Americas (Houston, TX)**

**Kawasaki Gas Turbine Europe GmbH (Frankfurt, Germany)**

**Kawasaki Heavy Industries, Ltd. (Tokyo, Japan)**

**Kawasaki Machine Systems, Ltd. (Shanghai Rep. Office)**

**Kawasaki Heavy Industries Middle East FZE (Dubai, UAE)**

**Kawasaki Gas Turbine Asia Sdn Bhd (Shah Alam, Malaysia)**

